

## **BZ 1 – BZ 2** PROCESSING CENTERS

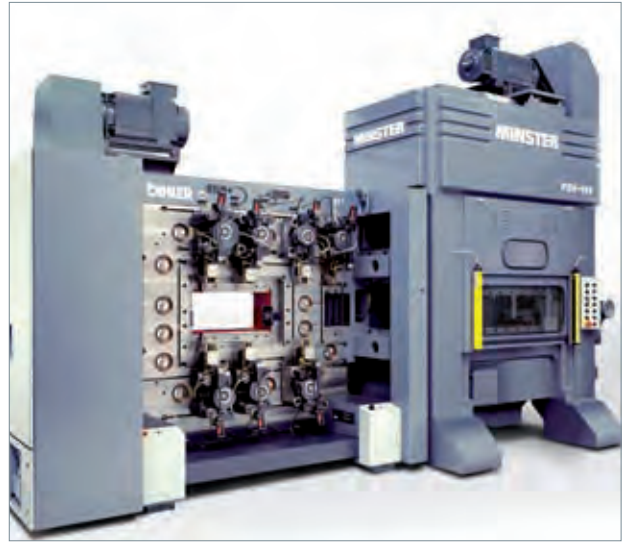
### Flexible manufacturing systems for maximum forming capacity

New applications are calling for new ideas. They require machine concepts which can flexibly be adapted to new manufacturing strategies in order to cope with ever more extensive and varying applications to be handled. This prerequisite is complied with the powerful processing centers BZ 1 and BZ 2 which cover all of the possibilities of BIHLER multi-technology. The compact machine systems are used for combined punching, bending, welding, assembling, tapping, screw insertion, etc. Even metal-

cutting operations can be integrated into the production processes. The machine concept encompasses two independent processing planes arranged parallel to each other, which can either be used separately or jointly for the production of larger-sized parts and assemblies. The BZ are suited to implement radial as well as linear tooling solutions. The multi-axis VariControl VC 1 guarantees easy handling and maximum process safety.

## Decisive advantages of BIHLER Processing Centers BZ

- Efficient, flexibly applicable manufacturing systems for higher forming capacities and larger-sized strip dimensions
- Open machine concept guarantees easy access for rapid and easy tool changeover and tool maintenance
- Perfect adaptation for individual customer solutions following the module design principle
- Integration of all BIHLER key technologies like threading, screw insertion, welding, etc.
- BZ are easy to insert and network into production lines
- Possibility to combine BZ 1 and BZ 2 with MINSTER presses (TWINTEC)
- Re-utilization of both the basic machines and their modular processing units for the manufacture of different assemblies



TWINTEC with BZ 1

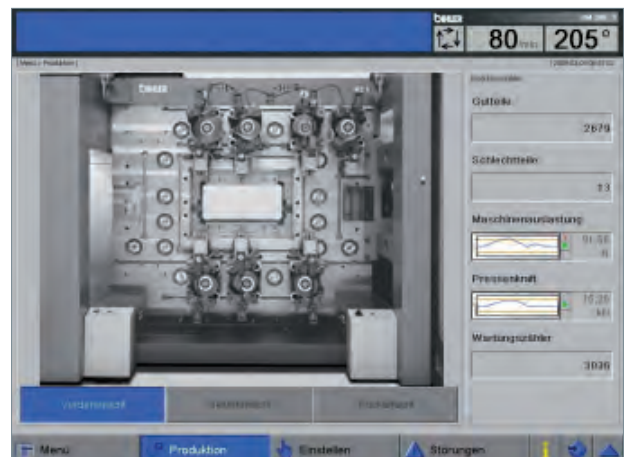
- Highest process reliability due to multi-axis control VariControl VC 1 with state-of-the-art control technology

## Technical data

	<b>BZ 1</b>	<b>BZ 2 (BZ 2/5)</b>
Stroke rate (1/min.)	continuously variable from 5 to max. 150	continuously variable from 5 to max. 400
Press	max. 300 kN, stroke 16 mm	max. 300 kN, stroke 12 mm
Slides	max. 120 kN, max. stroke 95 mm	max. 50 kN, max. stroke 50 mm
Central mandrel	max. 20 kN, max. stroke 80 mm	max. 10 kN, max. stroke 50 mm
Feed pitch	mech. feed: max. 500 mm, NC feed: any feed pitch	mech. feed: max. 240 mm, NC feed: any feed pitch
Material	max. strip width 160 mm, max. wire-Ø 10 mm	max. strip width 80 mm, max. wire-Ø 4 mm
Dimensions	width 3.130 mm x depth 2.100 mm x height 3.100 mm	width 2.130 mm; depth 1.400 mm; height 2.050 mm
Weight	approx. 16.000 kg (without units and tooling)	approx. 4.200 kg (without units and tooling)

## Easy handling - more process safety

The BZ processing centers are equipped with the BIHLER multi-axis VariControl VC 1. The control system ensures simple handling and operation of the machine via a 15" touch display and a multifunctional keyboard. Help functions as explanations, 3D animations, photos and videos make the VC 1 exceptionally user-friendly.



(subject to change without notice 11/09)