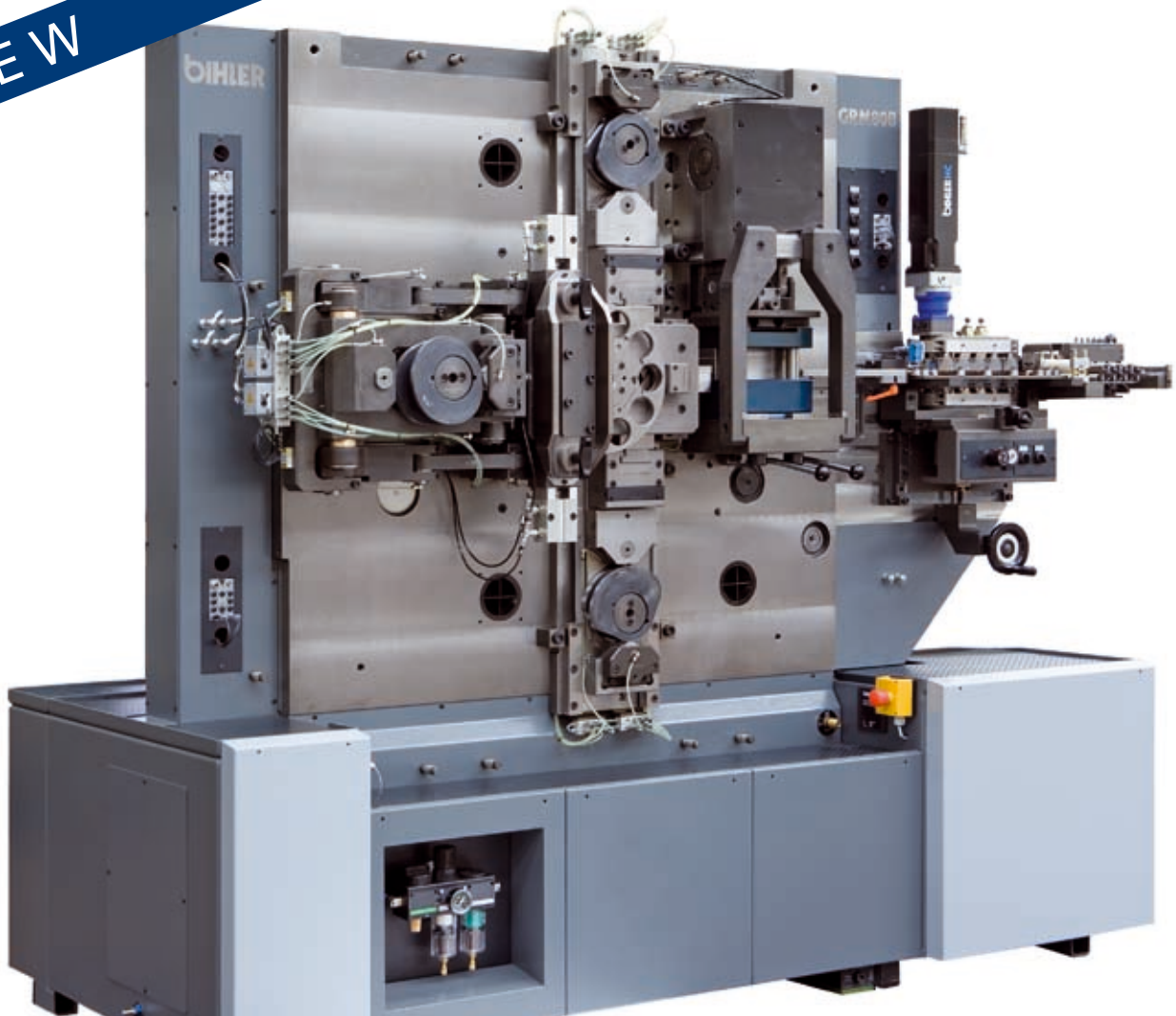


NEW



GRM 80B

BIHLER BUSHING MACHINE

Successful manufacture in all batch sizes

The new Bihler bushing machine GRM 80B offers manufacturers of larger precision bushes significant benefits: superior production speeds, excellent manufacturing quality and highest process reliability. Particularly innovative: the clearly structured tool concept. It allows re-tooling times to be reduced to a few minutes. Consequently the second set of tool fixtures can already be equipped with

the next active parts during production. Button-activated hydraulic rapid-clamp devices make it much easier to remove or set up the tooling. This complete package sets new price/performance standards. In conjunction with Bihler's comprehensive service bundle the RM 80B machine is an extremely promising investment in the future.

Get on the fast track with bush manufacture!

BIHLER

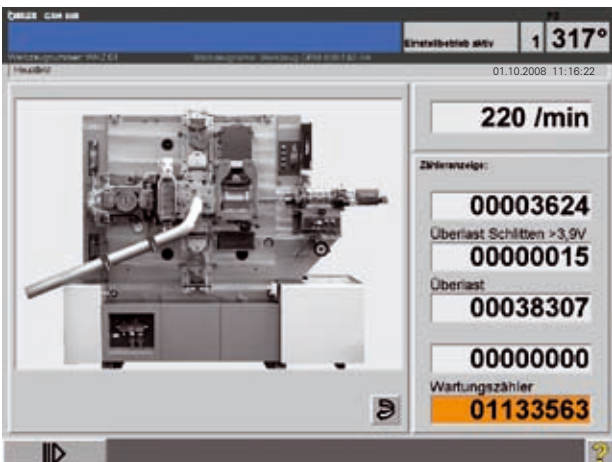
Convincing performance

The GRM 80B is designed for inner diameters of bushes from 15 to 40 mm and a maximum bush length of 50 mm (max. strip thickness 2 mm; max. strip width 50 mm). The machine's infinitely adjustable speed corresponds to 160 1/min for flanged bushes (collared bushes), and climbs to 220 1/min for cylindrical, straight bushes.



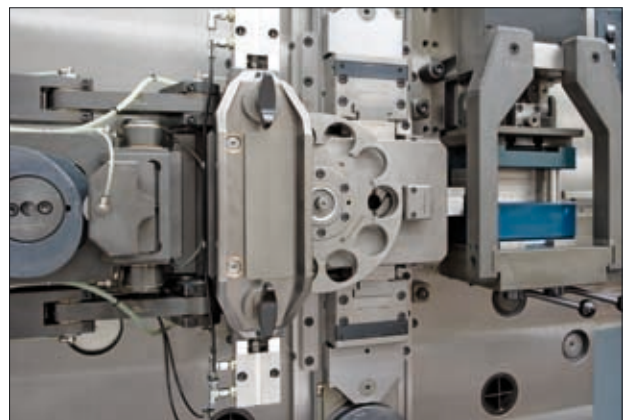
Innovative tooling concept

A basic tooling, two sets of tool fixtures and the active parts to be manufactured by the customer: These are the three components of a clearly structured tooling concept, which guarantees extremely short re-tooling times of only a few minutes. While the first tool set is used for part production on the machine the second set of tool fixtures can already be equipped with the next active parts. Button-activated hydraulic clamp devices make it much easier to remove or set up the tooling.



Cost-effective complete package

Bihler's GRM 80B is available as complete package consisting of the compact machine, tool components and standard accessories: a mechanical gripper feed with hydraulic clamping (optionally available NC feed RZV 2), the BRA II 75 strip straightener, a 100 kN 12 mm stroke two-point eccentric press, two positively-controlled wide slide units with a nominal force of 50 kN and 50 mm stroke, a central mandrel with 60 kN max. nominal force and 80 mm stroke, a 100 kN transverse press with 60 mm stroke, a rotary table drive and user and personnel protection.



New generation of Bihler controls

For highest process reliability the GRM 80B is equipped with the new Bihler VC1-E control. The control is located in a stand-alone control cabinet. The machine can be handled via a 15" touch screen and a multi-function keyboard.