

MC 42 – MC 82 – MC 120

MULTICENTER

Multi-functional machine systems for multiple processing

Market forces create a continuous demand for new products and a multitude of variants. The manufacture of complete sub-assemblies is becoming a standard requirement of virtually every order. With the BIHLER MULTICENTER series, a generation of machines designed to meet this requirement is now available. The MULTICENTER offer an extremely high level of flexibility and productivity. Most different processing techniques – punching,

bending, forming, tapping, screw insertion, and many more – may be variably automatized on one basic machine. For complex manufacturing solutions, each machine is provided with two fully functional operating planes, namely a radial and a linear processing face, which may be used independently of one another or combined with one another for flexible part or sub-assembly production.

Image: MC 120 with 1 narrow slide unit, 3 standard slide units and 2 bell-crank lever units (max. nominal force 160 kN, max. stroke 140 mm)

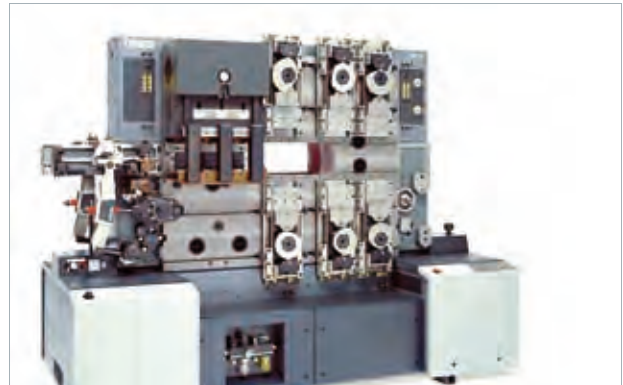
BIHLER

Further advantages of the MULTICENTER

- Two processing faces for radial and linear tooling concepts
- Production of complex products with simultaneous production of the individual parts
- Universally usable for longitudinal and transverse production
- Large opening in the centre for variable transverse movements
- Unrestricted access to all modules and tool stations facilitates setting up, adjustment and servicing
- High degree of availability owing to rapid tool changeovers and short resetting times
- Expansion of the machine concept and linkage with other production facilities
- High degree of re-utilization of basic machine and all modules
- Optimum safety at work provided by personnel protection and sound suppression enclosure



Multicenter MC 42



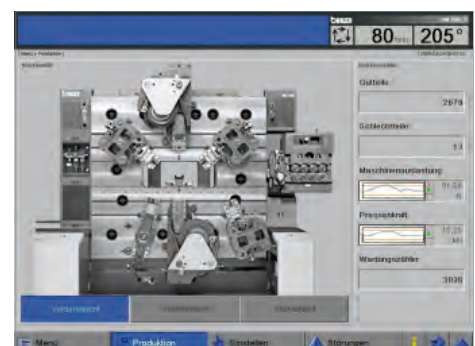
Multicenter MC 82

Specifications

	MC 42	MC 82	MC 120
Stroke rate (1/min.)	continuously variable from 5 to max. 350	continuously variable from 5 to max. 250	continuously variable from 5 to max. 150
Press	punching force 90 kN, stroke 12 mm	punching force 300 kN, stroke 16 mm	punching force 600 kN, stroke 20 mm punching force 700 kN, stroke 16 mm
Slides	max. 60 kN, max. stroke 40 mm	max. 90 kN, max. stroke 95 mm	max. 160 kN, max. stroke 140 mm
Central mandrel	max. 20 kN, max. stroke 45 mm	max. 35 kN, max. stroke 80 mm	max. 35 kN, max. stroke 80 mm
Feed pitch	mech. feed: max. 240 mm, NC feed: any feed pitch	mech. feed: max. 500 mm, NC feed: any feed pitch	mech. feed: max. 350 mm, NC feed: any feed pitch
Material	max. strip width (longit.) 60 mm, (transv.) 80 mm, max. wire-Ø 4 mm	max. strip width (longit.) 80 mm, (transv.) 200 mm, max. wire-Ø 6 mm	max. strip width (longit.) 160 mm, (transv.) 320 mm, max. wire-Ø 10 mm

Easy handling - more process safety

The Multicenter series is equipped with the BIHLER multi-axis Vari-Control VC 1. The control system ensures simple handling and operation of the machines via a 15" touch display and a multifunctional keyboard. Help functions as explanations, 3D animations, photos and videos make the VC 1 exceptionally user-friendly.



(subject to alteration 11/09)