

RM 40 B

BIHLER BUSHING MACHINE

Highest productivity and precision in bush manufacturing

The newly developed Bihler bushing machine RM 40B is a high-performance wonder. Where other bushing machines reach their boundaries, it gathers momentum! Four hundred bushes per minute are no problem whatsoever for this machine. Day for day and in excellent quality. Perfectly designed for the manufacture of cylindrical, straight and flanged bushes the compact RM 40B convinces not only through its high level of productivity and standardization but also – and primarily - through extremely short re-tooling times. The innovative Bihler rapid-change tooling system with hydraulic quick-lock fasteners to be

activated via switch makes it possible. On this machine tool changes are child's play! And the machine offers other decisive advantages such as extremely low costs of active tool components thanks to customer in-house production, identical outer geometry of bending punches and cams, and excellent machine stability and availability. In conjunction with the comprehensive Bihler service bundle the RM 40B is an extremely cost-effective investment in the future.

Get on the fast track with bush manufacture!

BIHLER

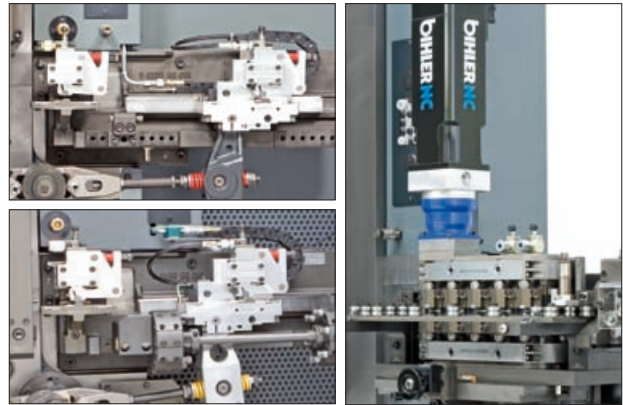


Convincing performance

The RM 40B can produce bushes without problems from 6 to 18 mm inner diameter and up to a maximum of 30 mm in long (max. strip dimensions 1.5 mm x 40 mm). The machine speed is infinitely adjustable and varies subject to the type of bush. If the speed, for flanged bushes (collared bushes), is at 250 1/min, it climbs to 400 1/min for cylindrical, straight bushes.

Cost-effective complete package

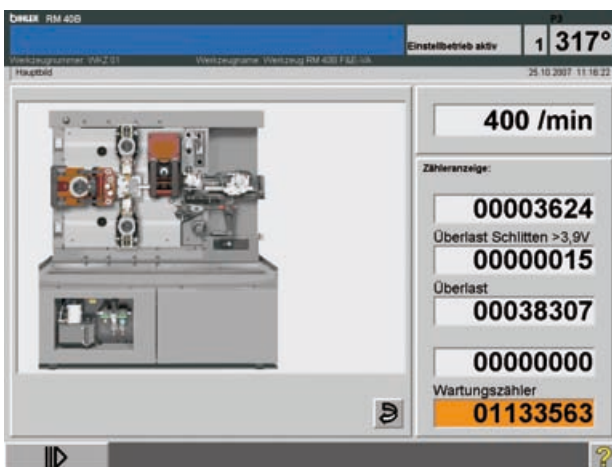
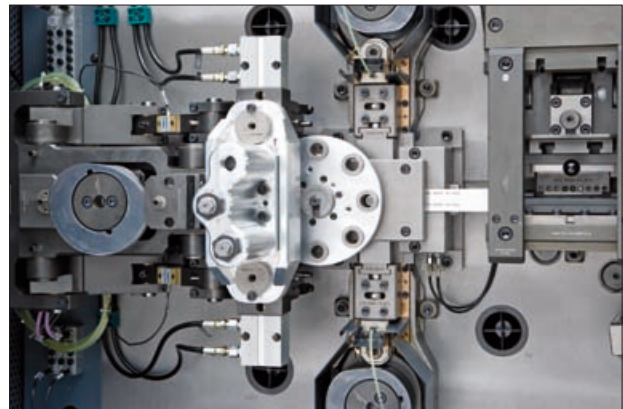
Bihler offers the RM 40B as complete package including the compact basic machine, standard accessories and clearly arranged tool components. A mechanical gripper feed with hydraulic clamping, the BRA-II-75 strip straightener, a 70 kN 12 mm stroke two-point eccentric press, two positively-controlled normal slide units with a nominal force of 30 kN and 25 mm stroke, a central mandrel with 30 kN nominal force and 50 mm stroke, a 60 kN transverse press with 35 mm stroke, a rotary table drive and user and personnel protection.



Available options: RZV 2 NC feed or turret feed

Innovative tooling concept

The innovative RM 40B tooling consists of the basic tooling, two sets of tool fixtures and the active parts (tool changeover parts). The latter are to be manufactured by the customer (e.g. Bihler blanks). The second set of tool fixtures can be pre-equipped for another bush type to achieve the fastest possible tool changeover times (partly less than 10 minutes). The simple rapid-change tooling system to be handled via switch adds to extremely short re-tooling times. The tool components' top degree of standardization ensures that they can be used all around the world and, by the efficient work of operators, considerably adds to increase machine runtimes.



New generation of Bihler controls

For highest process safety the RM 40B is equipped with the new Bihler VC1-E control. This control system has been designed and provided with an ideal display to handle the machine in an intuitional fashion. Thus it becomes transparent and self-explanatory. The control system has been fully integrated in the RM 40 B's machine housing. A 15" touch screen in the right sliding door allows for machine operation. A special highlight of this new Bihler control generation: It can be upgraded for multi-axis applications.

(subject to change without notice 04/08)