

VacuCheck

Measuring device for the volume flow during the evacuation process

Use :

- Process monitoring of vacuum die casting
- Characteristic evacuation values of high pressure dies
- Leak test of high pressure dies
- Fluidic applications in general

Advantages :

- flexible use
- minimum maintenance required
- long service life
- customised design



The sensor unit is mounted directly in the vacuum pipe between the vacuum unit and the die. The sensor unit is connected to the control and evaluation unit by a screened measuring line.

The control unit of the VacuCheck is mounted into a portable box. In the front of the box is the control with the visualisation system (SIMATIC). Displayed and stored are the volume flow and the amount of extracted air

Depending on the type of the VacuCheck a chart recorder is integrated



The VacuCheck is for 1 venting system and consist of :

- portable box
- Sensor unit
- Control unit
- Visualisation und parametrisation by input masks with SIMATIC C7-635
- Registration and storage of the volume flow and the amount of extracted air

Options :

- Extension to 2 venting systems
- Chart recorder for display and storage of the characteristic curves
- Integrated pressure measurement (max. 2 vacuum sensors)
- Profi bus
- Interface RS232
- Digital control input and output

Contact :

InterGuss Gießereiprodukte GmbH

Fallmeisterweg 5
91438 Bad Windsheim
Germany

Telefon : +49 (0)9841 650375
Fax : +49 (0)9841 650381
E-mail : interguss@t-online.de
Internet : www.interguss.de

Visualisation of measuring results

SIEMENS SIMATIC PANEL

HPDCM 1

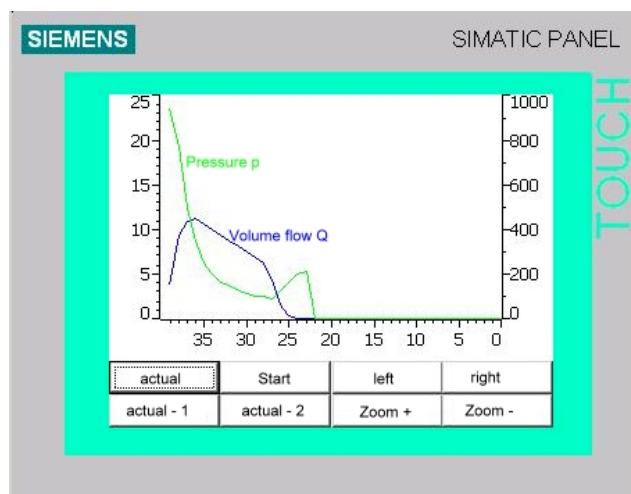
extracted air NOMINAL	4,8	l
extracted air ACTUAL	5,6	l
leak air	0,8	l
Volume flow at T_M	3,6	l/s
Pressure increase	10,2	mbar/s

EVACUATION OK

Data sheet
Start

TOUCH

Actual Shot



Diagram

SIEMENS SIMATIC PANEL

No.	Date/Time	i.O/n.i.O	dP mbar/s	VActual l	QM l/s
0	21.08.2006 10:26:42	i.O.	12,8	5,6	3,7
-1	21.08.2006 10:27:44	i.O.	14,6	5,9	4,7
-2	21.08.2006 10:28:43	n.i.O.	148,4	10,4	9,8
-3	21.08.2006 10:29:45	i.O.	9,7	5,3	3,3
-4	21.08.2006 10:30:46	i.O.	10,4	5,4	3,8
-5	21.08.2006 10:31:45	i.O.	10,2	5,6	3,6
-6	21.08.2006 10:32:45	i.O.	10,8	5,9	4,2
-7	21.08.2006 10:33:47	i.O.	11,1	5,5	4,9
-8	21.08.2006 10:34:47	i.O.	10,5	5,9	3,6

back

TOUCH

Data sheet